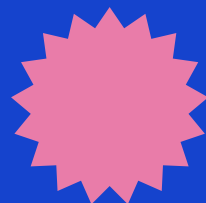


WICKFORD PCN



We are looking for a wide variety of people to join our new dynamic primary care network Patient Participation Group!

Could you help Wickford PCN, your practices and the wider community benefit each other by being the bridge between friends, family, neighbours and the NHS!?

The Wickford PCN is made up of 3 practices;

- Robert Frew Medical Centre
- Swanwood Partnership and
- London Road Surgery

Collectively we cover a patient list size of almost 39,000! We are working with secondary care, community providers and other local stakeholders to share best practice, provide extra workforce to support the needs of the population, and better serve our patients needs!

"So what's this all about then?"

We need you!

We need real people, with lived experience and who want to have a say in the way we build and offer healthcare in our practice and community. You can join the conversation whatever your age, background, beliefs or situation. Anyone with an interest in helping is welcome.



We will meet every over month at a local practice, to inform you of the PCN progress, local initiatives which you can get involved in, and discuss important topics which matter to YOU.

Please get in touch! → mseicb-bb.wickfordpcn@nhs.net

We look forward to welcoming you!